



**FACADE
ACCESS
SYSTEMS
COMBINED
AVIATOR &
ABSEIL POST**

CS 150, 250, 350, 450, 550,
650, 750



Facade Access Systems

Combined Aviator & Abseil Post

The Combined Aviator & Aviator Abseil Post has been developed to reduce roof installations in order to limit the number of times a roof membrane needs to be penetrated and re-sealed.

By introducing a combined function post not only are the number of installations halved but there is a reduced number of posts on the roof making for improved access and working efficiencies.

An uncluttered work area makes an important contribution to a safe working environment and helps to reduce the risks that come from working at height.

APPLICATIONS

An effective fall restraint system and secure abseil points provide a safe working environment for:

- Roof access for inspection and maintenance of:
 - Photo-voltaic panels
 - Air-conditioning units
 - Roof drainage systems
- Safe facade access by means of abseil to enable:
 - Window and facade cleaning
 - Window inspection
 - Small miscellaneous maintenance tasks

PRODUCT FEATURES

- Posts range in height from 150mm to 750mm in 100mm increments
- All posts are fully galvanised to BS EN ISO 1461
- Stainless steel option
- Safety line brackets are mounted over the abseil point to shield and protect the abseil attachment
- Injection moulded rain cap to guarantee roof integrity
- Complete range of fixing methods for all roof types

“An uncluttered work area makes an important contribution to a safe working environment and helps to reduce the risks that come from working at height.”





Facade Access Systems

Combined Aviator & Abseil Post

Product Information & Inspection Routines

CS - 150 - 750

Size : Posts range in height from 150mm to 750mm in 100mm increments

Working loads: ULS 15 kN

Materials :

- Steel Galvanised to meet BS EN ISO 1461 - with a minimum galvanic coating thickness of 55 μm or 390 g/m^2
- 304 Stainless steel

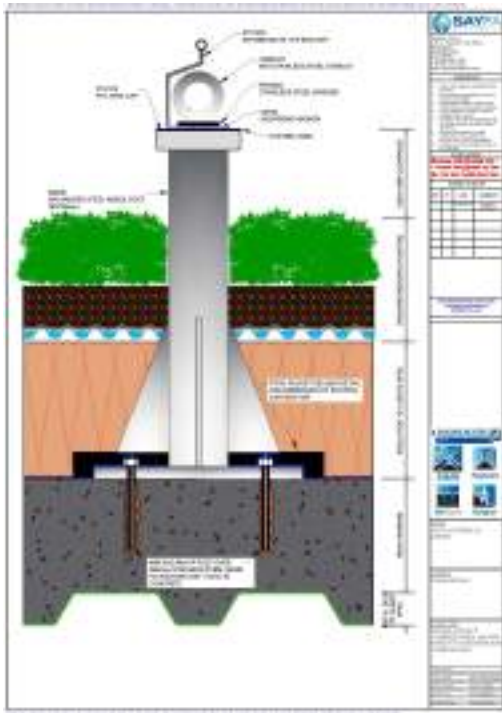
Thermal Conductivity: Low-Carbon/HSLAS: 89 $\text{W}/\text{m}^\circ\text{C}$ at 20°C I-F Steel: 93 $\text{W}/\text{m}^\circ\text{C}$ at 20°C

Inspection Routine

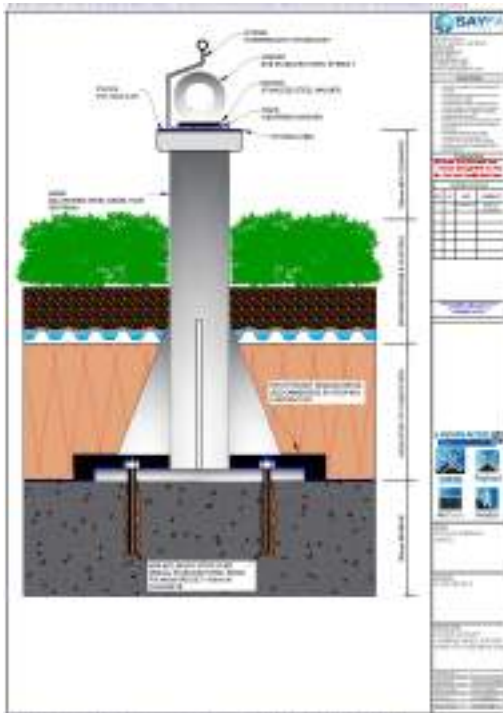
- All systems to be inspected at least every 6 months from date of installation.
- In harsh environments all systems to be inspected at least every 3 months.
- Inspections must be carried out by approved Sayfa engineers.
- Inspections must be approved to SIMS (Safety Inspection and Maintenance Service) standards.
- All inspections to be carried out to EN795:2012 and BS 7883:2005 and WAHSA (inspection of eyebolts) requirements for safety line and anchor points.
- Contact Sayfa Systems to arrange inspections.



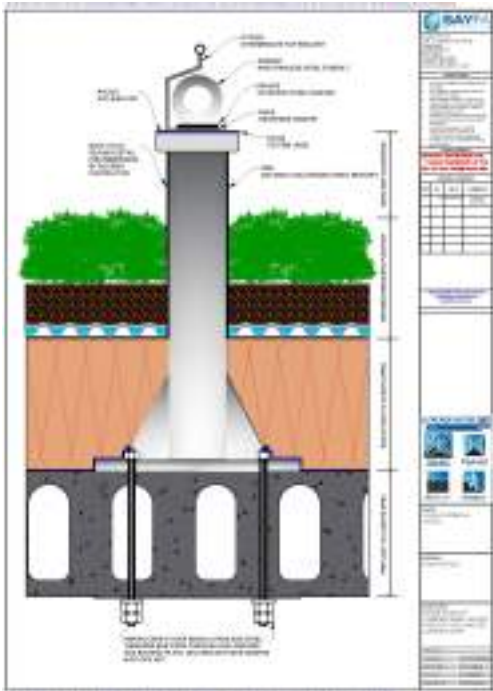
Fixing details



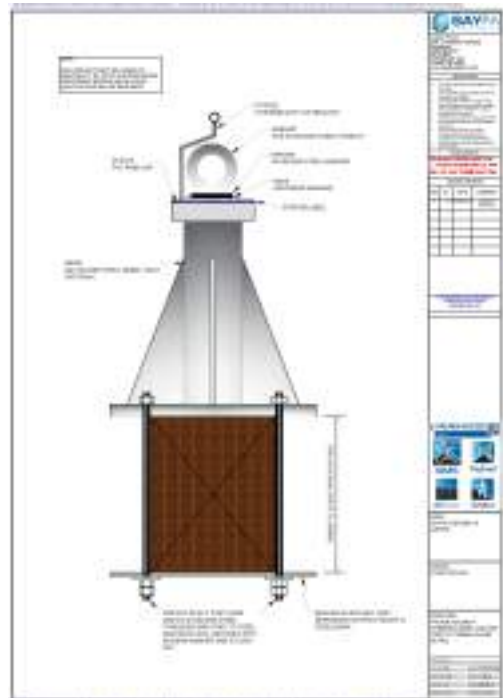
Concrete on Metal Deck



Concrete Slab



Hollowcore Concrete Deck



Fix to Timber



The Sayfa Facade Access System

Combined Aviator and Abseil post



ABOUT SAYFA

OUR PURPOSE IS TO KEEP PEOPLE SAFE WHEN WORKING AT HEIGHT

We design, manufacture, install and maintain a range of fall protection and fall prevention products with the sole aim of either eliminating or reducing the risks associated with working above ground level.

From providing safe access to rooftops and building facades for maintenance purposes, to load and work platforms and fall arrest systems used extensively in the housebuilding and construction industry, we are always thinking ahead with a view to generating a better, more effective and safer system. At SAYFA SYSTEMS – Safety comes first.

Part of the Propco Construct Group of companies

OUR VALUES

- Respectful
- Energetic
- Accountable
- Caring
- Honest



Sayfa Systems Ltd
Jubilee House
Gelders Hall Road
Shepshed
Loughborough
Leicestershire
LE12 9NH

T: 01509 502 155
email: info@sayfasystems.com
www.sayfasystems.co.uk